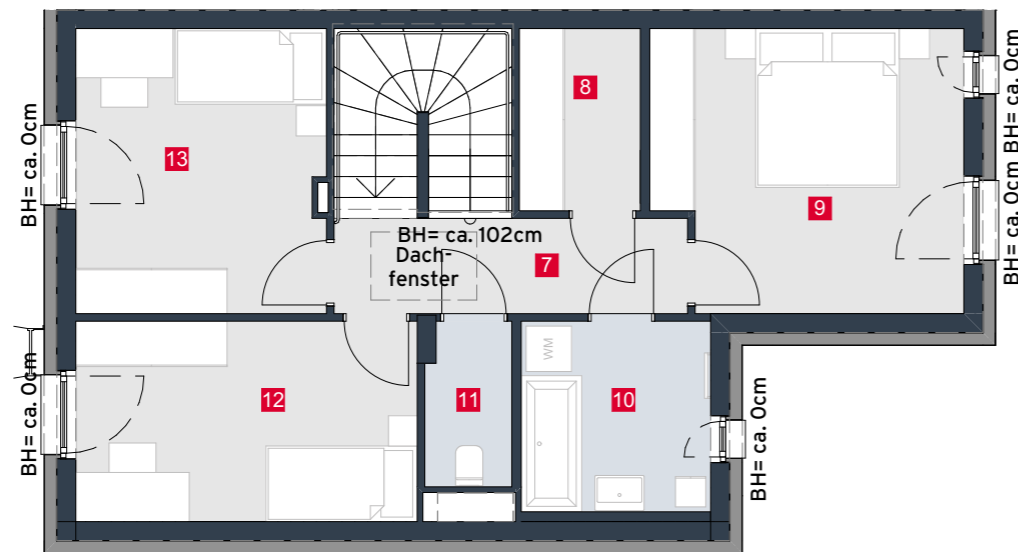


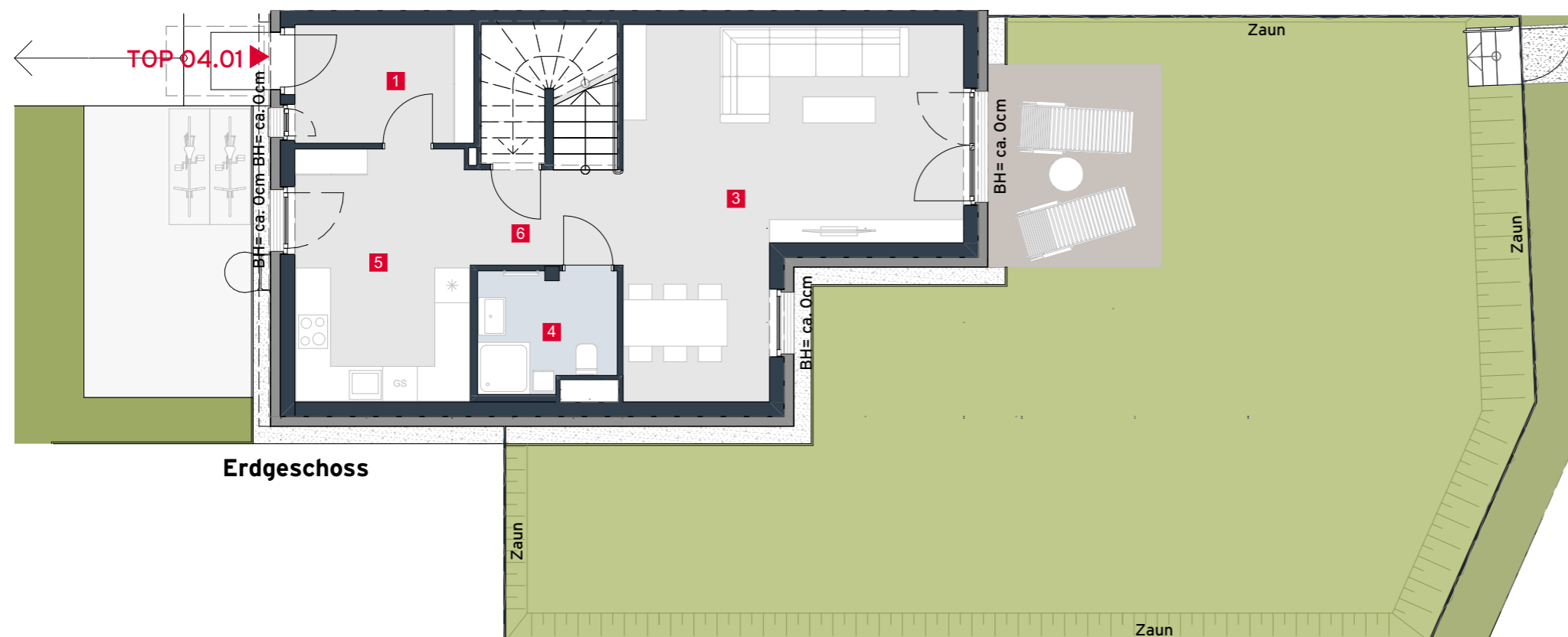
HAUS 04 TOP 01

Wohnfläche	119,38m ²
Terrasse	10,50m ²
Garten	127,24m ²

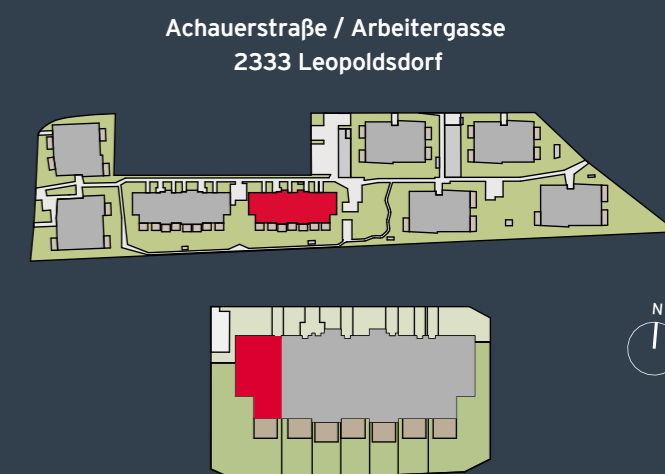
EG	1	Vorraum	6,03m ²
	2	AR	4,56m ²
	3	Wohnzimmer	29,00m ²
	4	Bad	4,81m ²
	5	Küche	13,29m ²
	6	Gang	4,22m ²
OG1	7	Gang	5,70m ²
	8	AR	3,67m ²
	9	Zimmer	15,06m ²
	10	Bad	6,25m ²
	11	WC	2,40m ²
	12	Zimmer	12,02m ²
	13	Zimmer	12,37m ²



1. Obergeschoss



Erdgeschoss



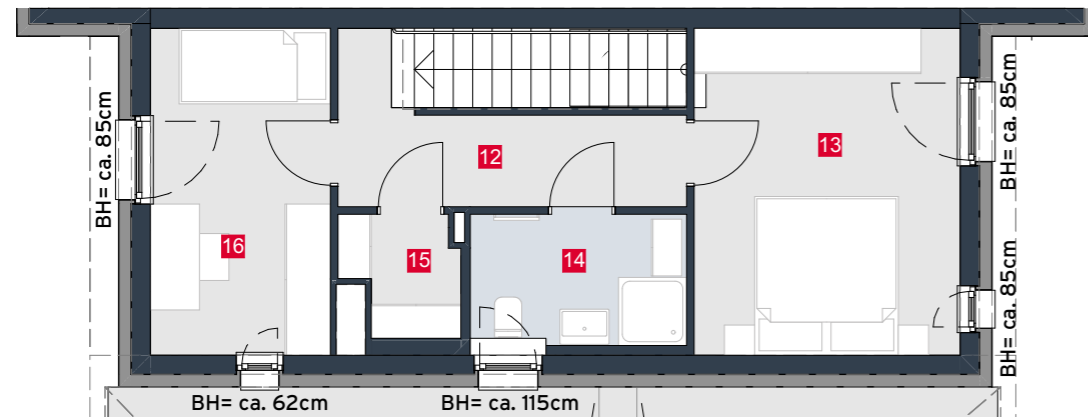
VERKAUF

Luca Vogelsinger
 Tel. +43 1 7150030-3228
 Mobil +43 664 8348138
 luca.vogelsinger@rhomberg.com
 www.rhomberg.com

HAUS 04 TOP 02

Wohnfläche	129,97m ²
Terrasse	10,50m ²
Garten	31,11m ²

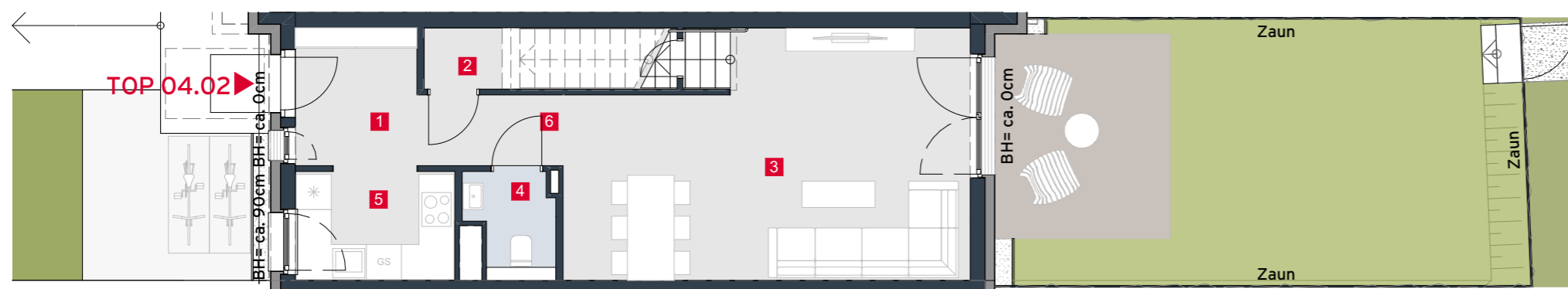
EG	1	Vorraum	5,16m ²
	2	AR	4,22m ²
	3	Wohnzimmer	26,69m ²
	4	WC	2,15m ²
OG1	5	Küche	5,46m ²
	6	Gang	2,90m ²
	7	Gang	9,07m ²
	8	Zimmer	14,03m ²
DG	9	Bad	5,59m ²
	10	WC	2,30m ²
	11	Zimmer	12,78m ²
	12	Gang	6,70m ²
	13	Zimmer	15,05m ²
	14	AR	2,98m ²
	15	Bad	4,37m ²
	16	Zimmer	10,52m ²



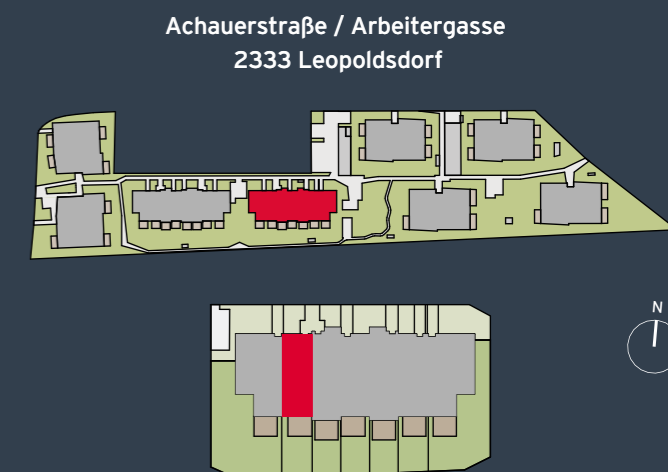
2. Obergeschoss



1. Obergeschoss



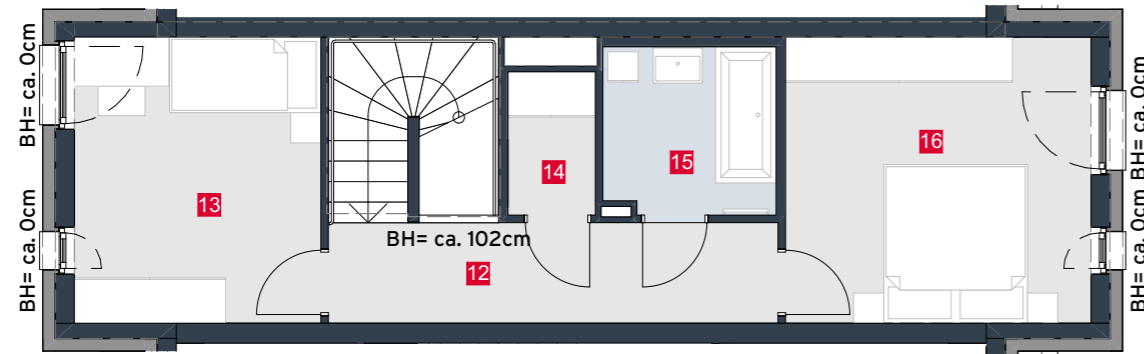
Erdgeschoss



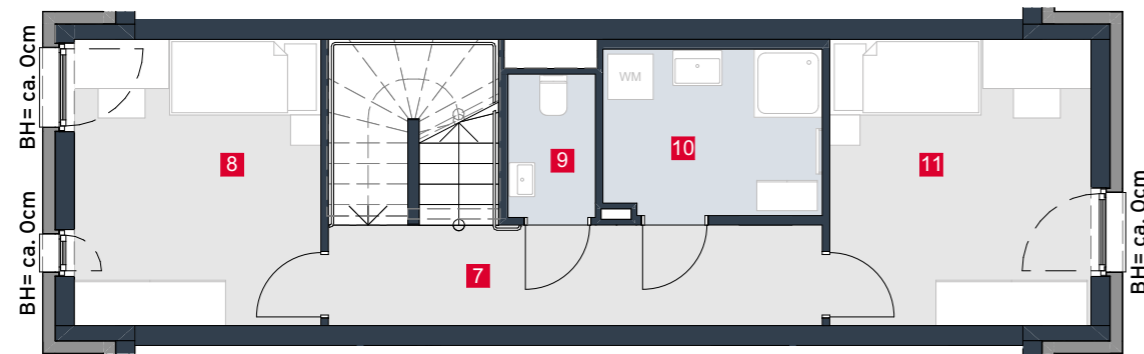
HAUS 04 TOP 03

Wohnfläche	129,98m ²
Terrasse	10,50m ²
Garten	23,40m ²

EG	1	Vorraum	3,88m ²
	2	Küche	7,02m ²
	3	AR	3,66m ²
	4	WC	2,14m ²
	5	Wohnzimmer	23,00m ²
	6	Gang	4,97m ²
OG1	7	Gang	8,69m ²
	8	Zimmer	12,34m ²
	9	WC	2,14m ²
	10	Bad	6,32m ²
	11	Zimmer	13,10m ²
DG	12	Gang	7,89m ²
	13	Zimmer	12,34m ²
	14	AR	2,19m ²
	15	Bad	4,95m ²
	16	Zimmer	15,35m ²



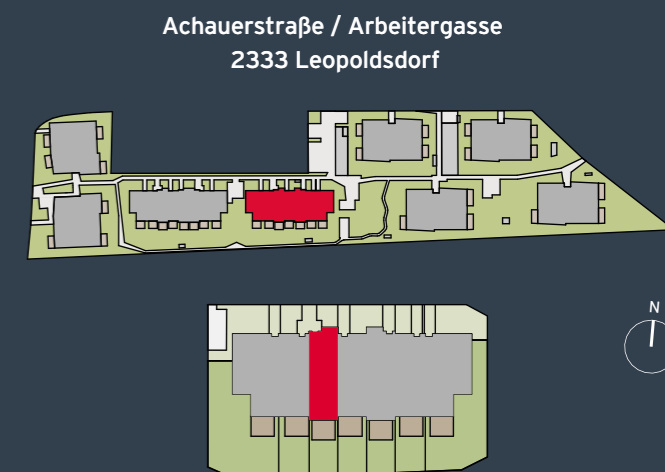
2. Obergeschoss



1. Obergeschoss



Erdgeschoss



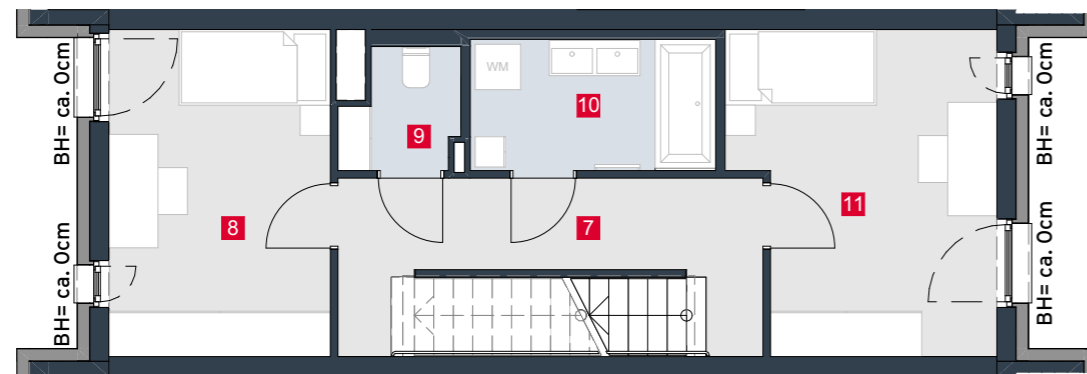
HAUS 04 TOP 04

Wohnfläche	129,99m ²
Terrasse	10,50m ²
Garten	29,30m ²

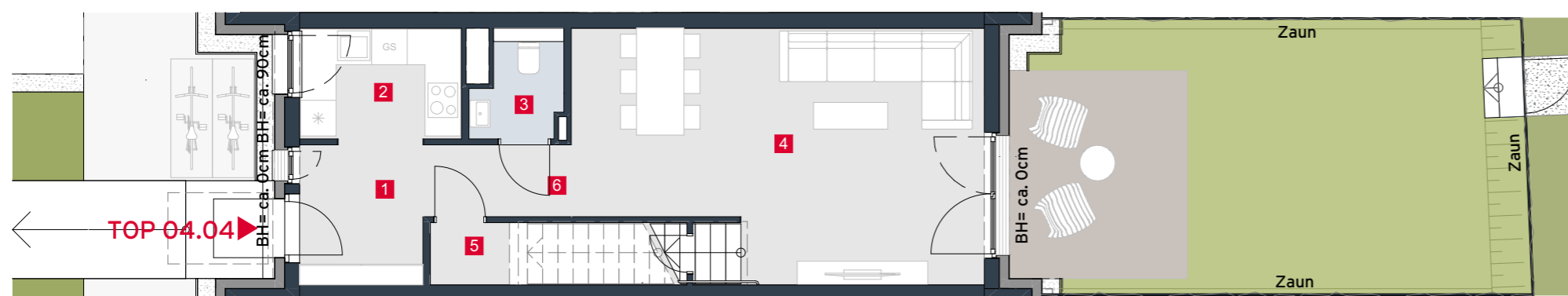
EG	1	Vorraum	5,16m ²
	2	Küche	5,46m ²
	3	WC	2,15m ²
	4	Wohnzimmer	26,69m ²
	5	AR	4,22m ²
	6	Gang	2,90m ²
OG1	7	Gang	9,07m ²
	8	Zimmer	12,78m ²
	9	WC	2,30m ²
	10	Bad	5,59m ²
DG	11	Zimmer	14,03m ²
	12	Gang	6,70m ²
	13	Zimmer	10,52m ²
	14	Bad	4,39m ²
	15	AR	2,98m ²
	16	Zimmer	15,05m ²



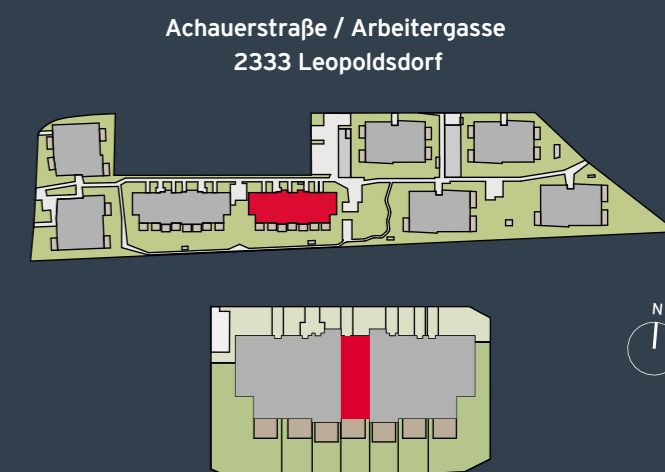
2. Obergeschoss



1. Obergeschoss



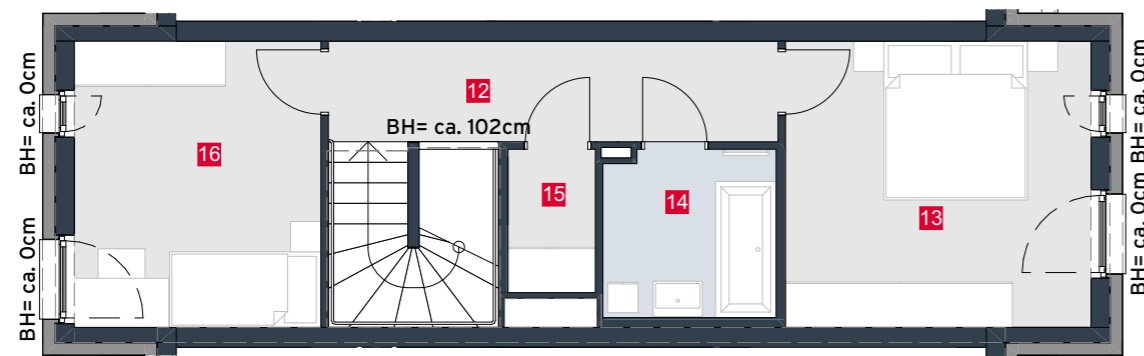
Erdgeschoss



HAUS 04 TOP 05

Wohnfläche	129,98m ²
Terrasse	10,50m ²
Garten	21,97m ²

EG	1	Vorraum	3,88m ²
	2	Gang	4,97m ²
	3	Wohnzimmer	23,00m ²
	4	WC	2,14m ²
	5	AR	3,66m ²
	6	Küche	7,02m ²
OG1	7	Gang	8,69m ²
	8	Zimmer	13,10m ²
	9	Bad	6,32m ²
	10	WC	2,14m ²
DG	11	Zimmer	12,34m ²
	12	Gang	7,89m ²
	13	Zimmer	15,35m ²
	14	Bad	4,95m ²
	15	AR	2,19m ²
	16	Zimmer	12,34m ²



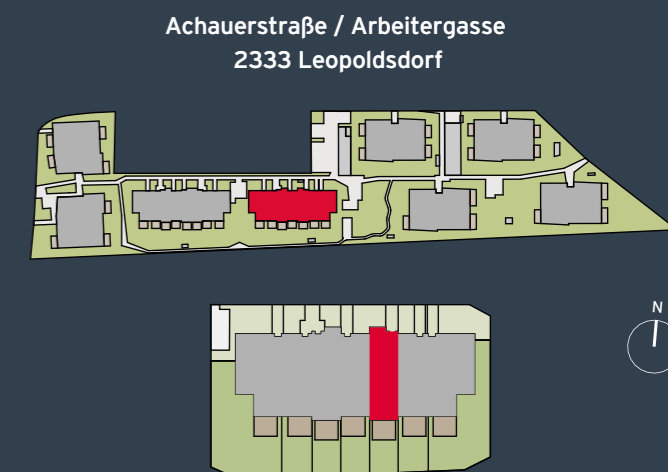
2. Obergeschoss



1. Obergeschoss



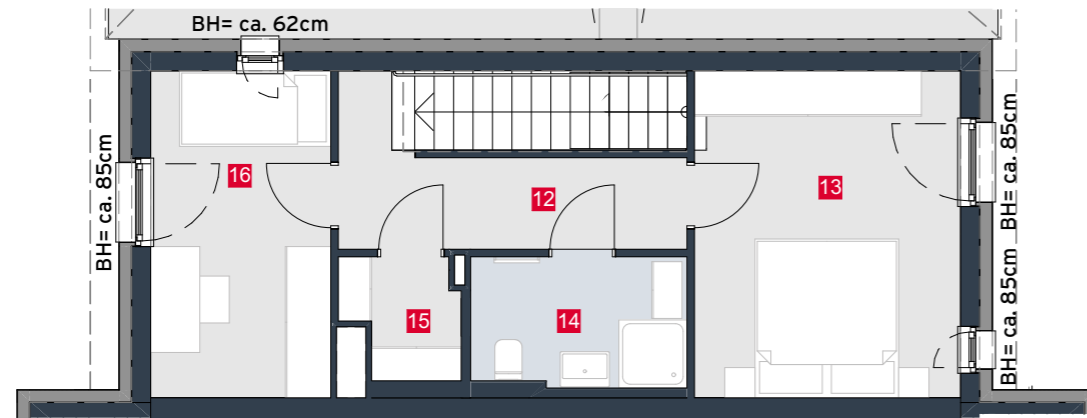
Erdgeschoss



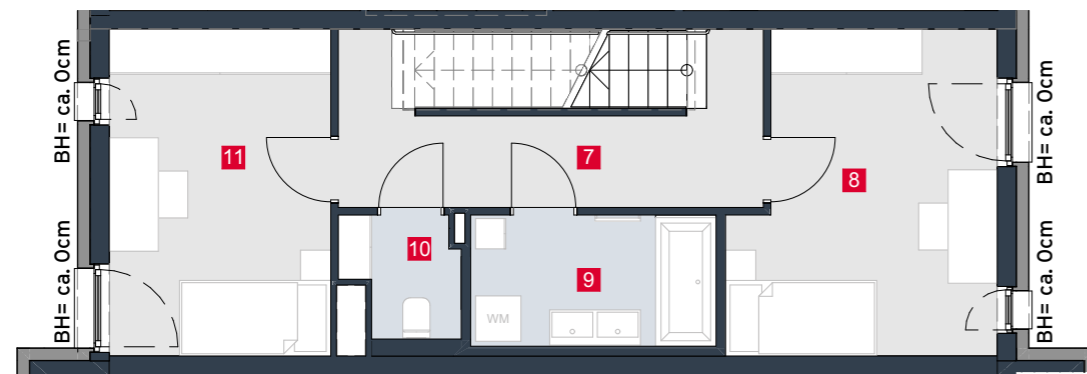
HAUS 04 TOP 06

Wohnfläche	129,98m ²
Terrasse	10,50m ²
Garten	24,47m ²

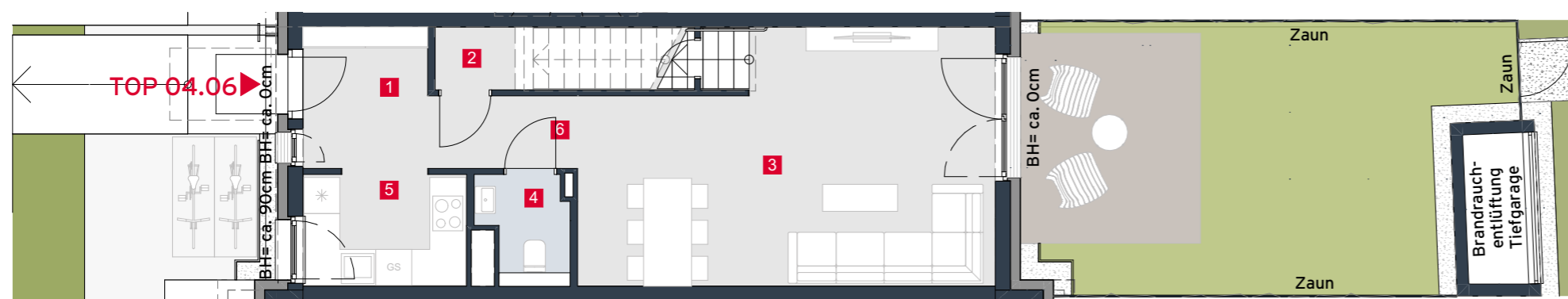
EG	1	Vorraum	5,16m ²
	2	AR	4,22m ²
	3	Wohnzimmer	26,69m ²
	4	WC	2,15m ²
	5	Küche	5,46m ²
	6	Gang	2,90m ²
OG1	7	Gang	9,07m ²
	8	Zimmer	14,03m ²
	9	Bad	5,59m ²
	10	WC	2,30m ²
DG	11	Zimmer	12,78m ²
	12	Gang	6,70m ²
	13	Zimmer	15,05m ²
	14	AR	2,98m ²
	15	Bad	4,39m ²
	16	Zimmer	10,51m ²



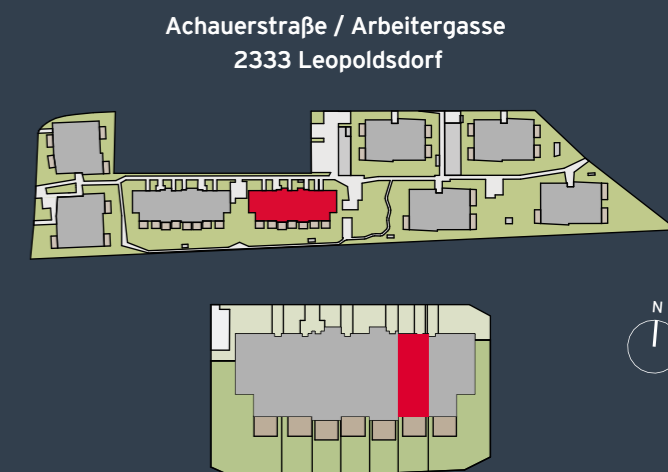
2. Obergeschoss

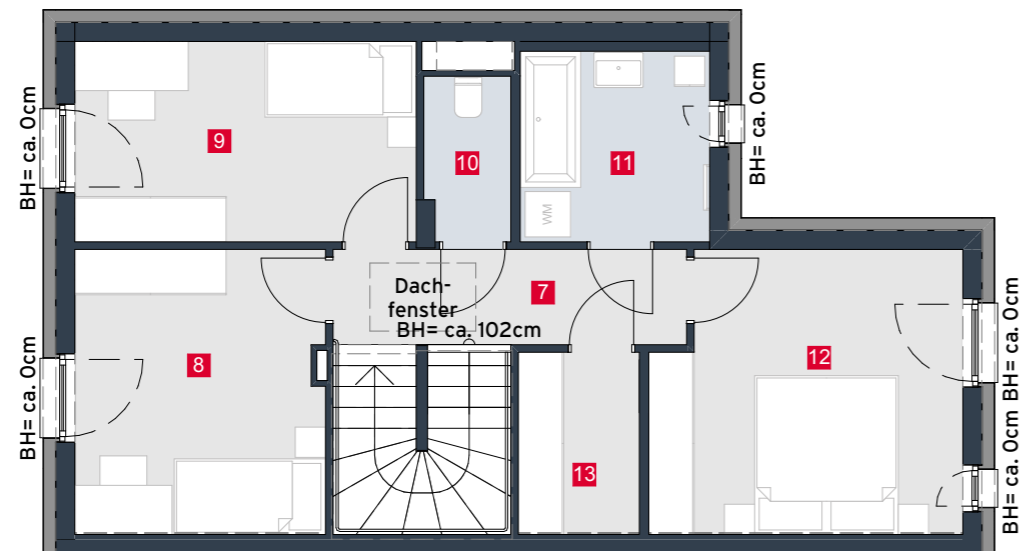


1. Obergeschoss

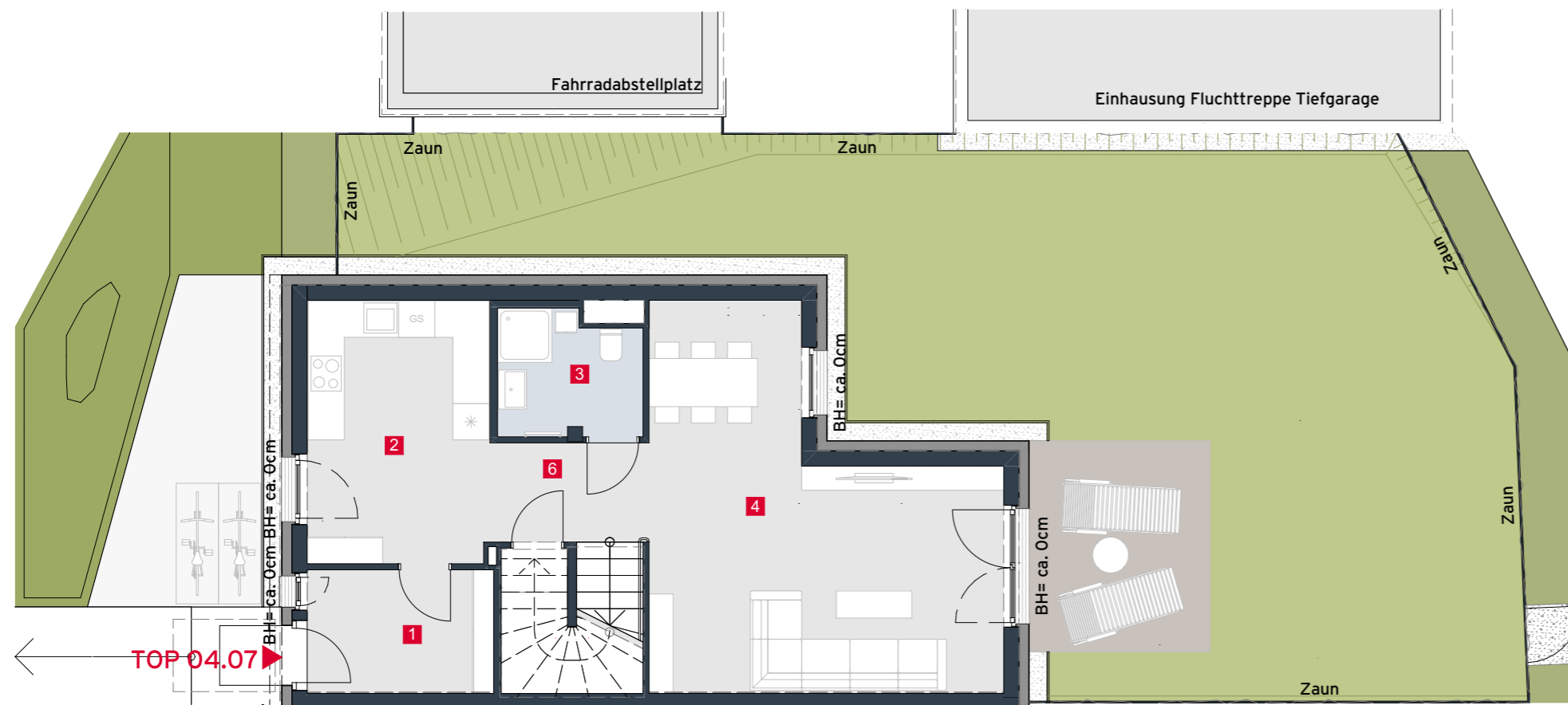


Erdgeschoss





1. Obergeschoss



Erdgeschoss

HAUS 04 TOP 07

Wohnfläche	119,38m ²
Terrasse	10,50m ²
Garten	99,70m ²

EG	1	Vorraum	6,03m ²
	2	Küche	13,29m ²
	3	Bad	4,81m ²
	4	Wohnzimmer	29,00m ²
	5	AR	4,56m ²
	6	Gang	4,22m ²
OG1	7	Gang	5,70m ²
	8	Zimmer	12,37m ²
	9	Zimmer	12,02m ²
	10	WC	2,40m ²
	11	Bad	6,25m ²
	12	Zimmer	15,06m ²
	13	AR	3,67m ²

Achauerstraße / Arbeitergasse
2333 Leopoldsdorf

