



At home in building

What makes a house a home?

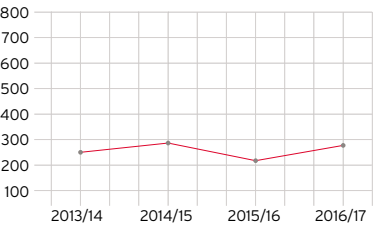
We want to feel comfortable. We want to feel secure. We want to be able to thrive. We humans are not alone with this wishlist for buildings we call home. The world of animals also shows us in a fascinating way how individual needs find their expression in quite sophisticated architecture. The common principle is based on great ideas.



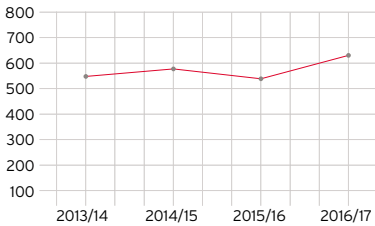
Innovative ideas

We love building. Perhaps because it is in our genes, since we have done it for generations. Or simply because we are good at it. Or possibly because each building is an expression of the deeply human need for shelter, for feeling safe and secure. What is certain is that we are driven by a strong desire to merge the visions and objectives of our customers with our own and to make them become reality - to manifest them in this world. And not just in any odd manner, but with innovative ideas, with durable value and sustainably. All in the spirit of our responsibility for the long-term effects of our activities.

We are passionate about good-quality building. That is the blueprint for our success. You can consider our success objectively - in data, facts and figures. But you can also experience it subjectively - measured by the degree of your satisfaction. Most impressively so when you move into your building and experience it for the first time.



Rhomberg Bau turnover in million euros



Number of employees at Rhomberg Bau



Cornelius Rhomberg



Walter Rhomberg



Walter-Heinz Rhomberg



Hubert Rhomberg

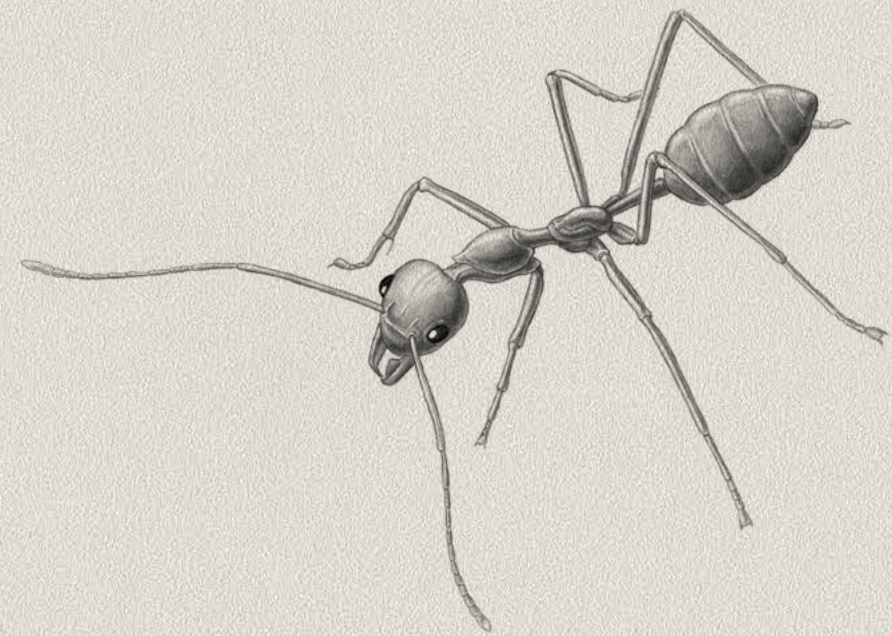
Success based on experience

Rhomberg Bau is a company with tradition – with a family tradition. Rhomberg dates back to 1886 and is now managed by the family in the fourth generation, being active in Austria, Germany and Switzerland: from the Bregenz Festspielhaus to innovative timber buildings, such as the Illwerke Zentrum Montafon and residential developments, such as that at the yacht harbour in Lindau, to the project at Sandgrubenweg in Bregenz and flagship projects such as the Star Inn Hotel in Vienna and the WESTside Shopping and Leisure Centre in Bern. Projects such as these are a testimony to the company's many years of success. – Success we are proud of. And success that motivates us to keep on developing the company; so it is not surprising that today Rhomberg Bau is an international group of companies. In addition to our activities in the construction sector – where we have our core competence – we produce our own building materials via our "Resources" business unit.

Furthermore, with the Rhomberg Sersa Rail Group we are one of the worldwide leading railway engineering companies. With our integrated ISO 9001 project management system, our approach to building design, our ongoing development and our choice of materials we keep abreast of developments and set benchmarks for modern, progressive building.

But a whole century of building lasting properties also involves responsibility! Rhomberg Bau is focused on longevity, commercial stability and sustainability and – importantly – on innovation. Because we want to take responsibility for the generations to come. And we want to continue to do so in the generations to come.

Seeing the
individual
whole





» The building material grows on trees in the immediate vicinity: Australian weaver ants construct their nests using leaves and weave these with silk threads, which are produced by their larvae. Often, several of these elaborate structures are formed in a tree, forming a fascinating whole.

Quality from the start to the beginning

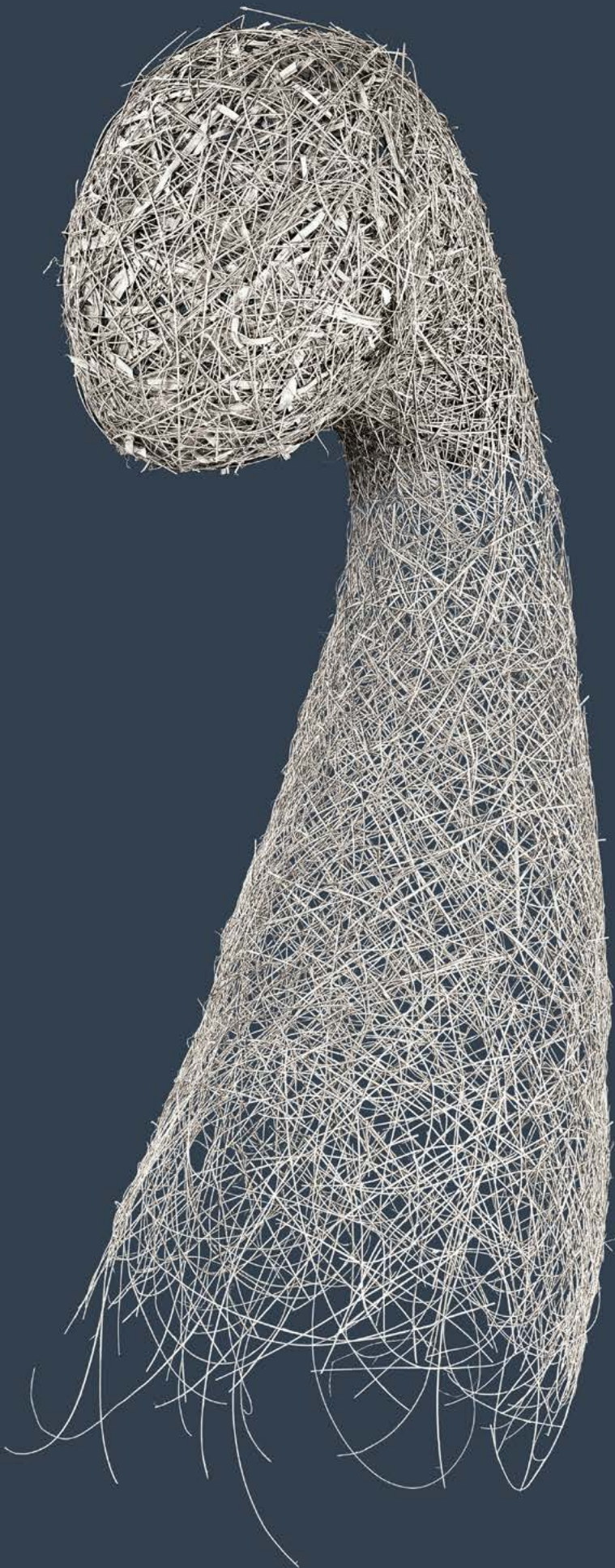
Every customer and every building presents its own challenges to a construction company. As a full service provider, Rhomberg Bau meets these challenges comprehensively. For private clients and for investors, commercial organisations and public institutions. Irrespective of the type of project, i.e. turnkey construction, property management or recycling. And irrespective of the size, be it a garden wall, a complete housing estate or a city quarter. Owing to Rhomberg Bau's broad range of services, all types of contracts are dealt with efficiently. In combination with our strong commitment and the fruitful innovations we produce again and again, the many years of experience of our development and construction specialists lead to tangible advantages for our clients.

Even though needs and requirements are very diverse, they have one thing in common: we have to tackle them holistically in order to achieve the best possible result. For this reason we take into account the entire life-cycle of all our buildings and projects - from the cradle to the cradle. We aim to plan and design buildings and projects in such a way that they meet the most demanding requirements regarding commercial viability, energy efficiency, careful use of resources and social responsibility. But above all: that they meet our customers' needs and desires.

Property, project and location development	Developer, housing and commercial	Project management and project control	General contractor and prime contractor
Timber and system construction in steel, concrete and timber	Building construction and civil engineering	Conversions and refurbishment - upgrading existing buildings	Facility management and corporate real estate management
Analysis and valuation, agency services, selling and letting	Recycling and secondary raw materials	Concrete and asphalt	Quarry and resource centre

**We
build
for the
future**





» Even before the nest of a weaver bird is used for its offspring, it has to fulfil an important task. The female decides, on the quality of the structure, whether she will accept the builder as the father of her offspring. But what to do when she doesn't like the work? Initially, the male will not fully tighten the knots and slinging so that, in the case of failure, the nest can be quickly dismantled again and a new nest constructed.

Asking the right questions

In order to achieve the best possible solutions for our customers, we place our company on solid foundations. And in order to be able to select suitable foundation stones for these foundations, we like to look ahead: what are the defining trends in the market? What are the challenges our customers face in the fields of resources and energy efficiency? What are the objectives of clients and property owners? How can we support them with the best members of staff?

The answers to these questions help us to make the right decisions. In this way, we have created structures in which we accept your challenges and can find competent solutions, and have found employees who will complete their tasks with strong motivation and commitment. And in this same way, we continue to develop good ideas which help us to actively contribute to the future.

The reason: the world we build today is the world our children will inhabit tomorrow.



**Compelling
through**

passion



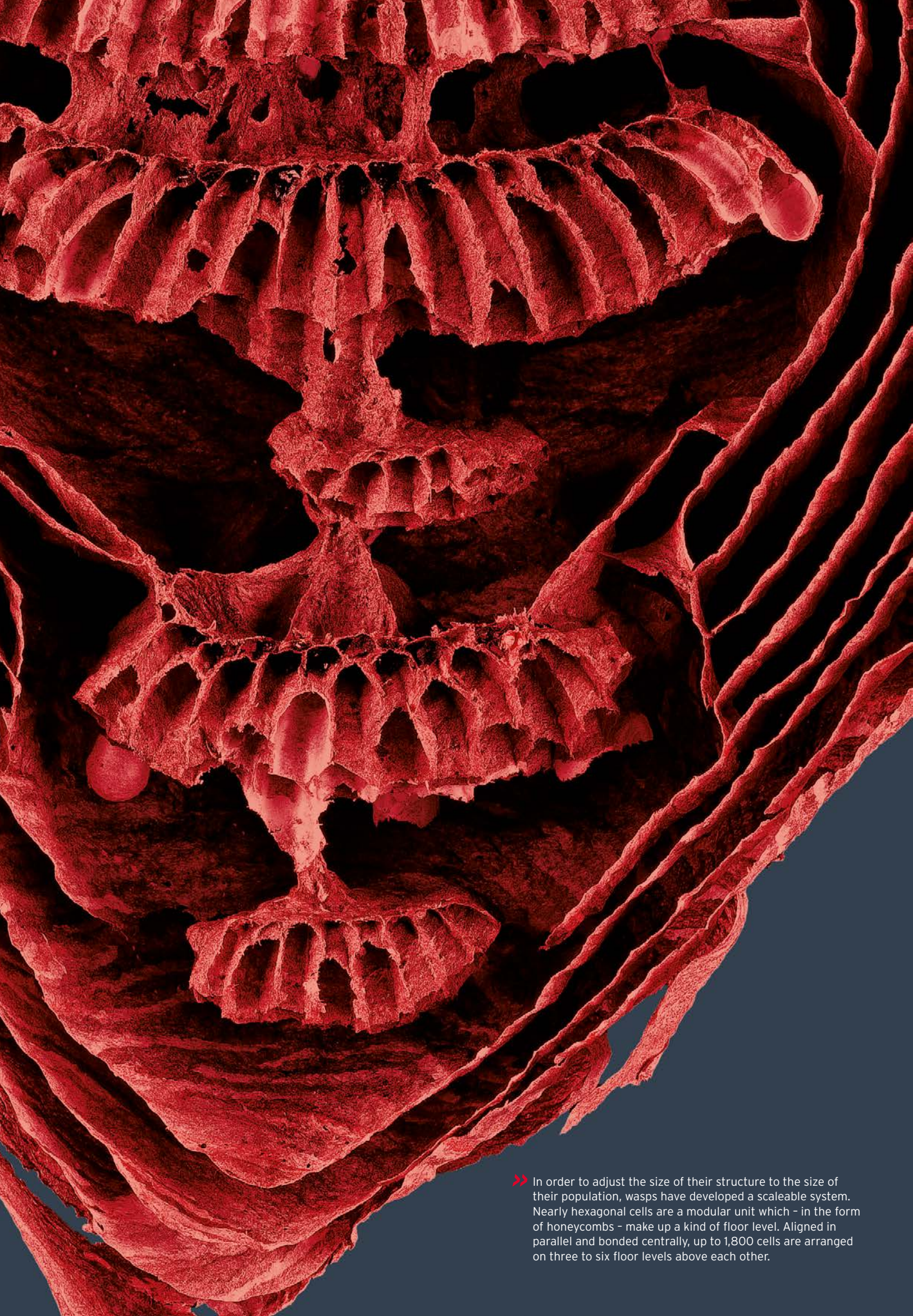
We provide proof

When you opt for Rhomberg Bau you decide in favour of competence, quality, professionalism, performance and - above all - in favour of passion. We back this up with actions: you will receive tailor-made solutions that are perfectly designed for the respective neighbourhood, the existing infrastructure and, of course, your personal requirements. And we take special care to achieve the right combination of investment and operating costs. You can rely on us completing your project on time and within budget.

Numerous awards, quality seals and certificates received by our company confirm your decision. We are the first Austrian construction company to have opted for voluntary certification of our value-oriented, exemplary company management by the Austrian Society for Sustainable Property Management (ÖGNI). The award also means that we comply with the standards of the "Initiative for Corporate Governance in the German Real Estate Industry". In Switzerland, Rhomberg Bau's high standard of workmanship is confirmed by our membership of the Association of Swiss General Contractors (VSGU).



» When wasps build their nests, they chew dry and rotten wood. Using this paper-like building material they fashion their nest with great care. Only a small entrance opening leads through the multi-layer envelope to the inside of the organic structure. With this construction, the wasps ensure that the nest does not overheat, even at temperatures of 50 °C.



Flexibility holds value

Whether you opt for a conversion, refurbishment or new building - your decision will have an impact for many years to come. This means that it must be well founded.

Your order is in good hands with us because we adapt our work to your needs and think in terms of customer benefit. Our tool is the life-cycle analysis. At the design stage we contemplate how the completed building is going to be operated and how its use can best be changed or how it can be taken down again. That saves resources in general and saves you costs in the future. Some people call this sustainability, environmental protection or careful use of resources. We just call it efficiency. This creates the best possible result: values that last.

Rhomberg produces buildings that win awards - awards from independent institutions. Some have even won several awards. The QuadraDo in Dornbirn was awarded the ÖGNI Certificate in gold, and the Star Inn Hotel Premium near Vienna railway station received the gold LEED Certificate. The residential estate at Sandgrubenweg in Bregenz was awarded the Mobility prize by the Austrian Automobile Association, the 2013 Coronati prize, and the Timber Construction prize by the Vorarlberger Holzbau-Kunst Association. In addition, there are numerous awards for the innovative timber hybrid construction system by Cree.

2094

Removal

Change of use

Refurbishment

Use phase

Construction phase

Design phase

2114

2094

2074

2054

2034

2014

>> In order to adjust the size of their structure to the size of their population, wasps have developed a scaleable system. Nearly hexagonal cells are a modular unit which - in the form of honeycombs - make up a kind of floor level. Aligned in parallel and bonded centrally, up to 1,800 cells are arranged on three to six floor levels above each other.



Building is
a matter of trust

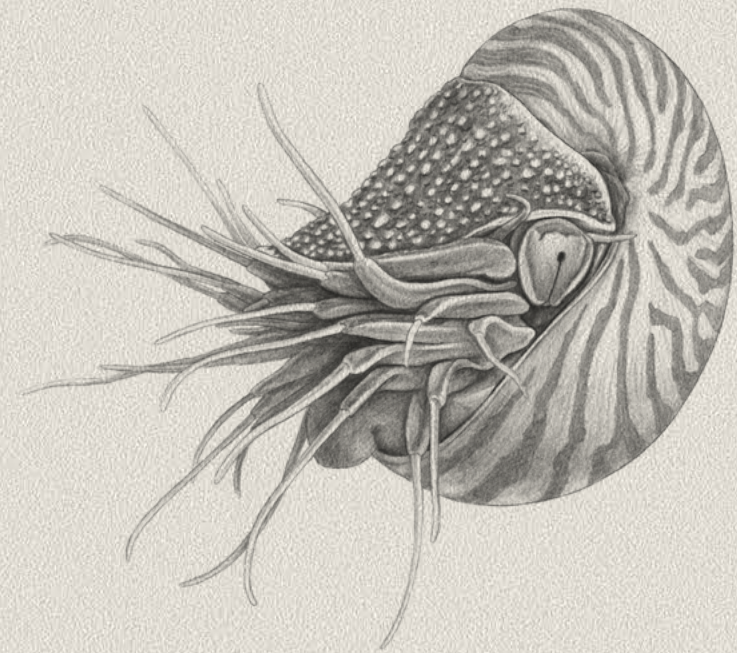
» The harvest mouse builds a very special place for its offspring. A sphere woven of grass at about one metre height keeps the nest nicely dry and warm. The form of suspension ensures that the nest is perfectly safe from impact. This means that these rodents are not only well protected during bad weather, they also have their nest right in the larder. Because they find their food right outside the small round entrance.



What you can rely on

Fairness, honesty and reliability are more than just words. For that reason we work with complete transparency and traceability during all phases of our joint project. Our professional project management ensures that we deliver what has been discussed and promised. In that way, you are informed about the process at all times. You benefit from our excellent specialists and the extensive network that we cooperate with for your benefit. And just in case there are any issues, we provide one contact person who will reliably and competently support you throughout the duration of the project.

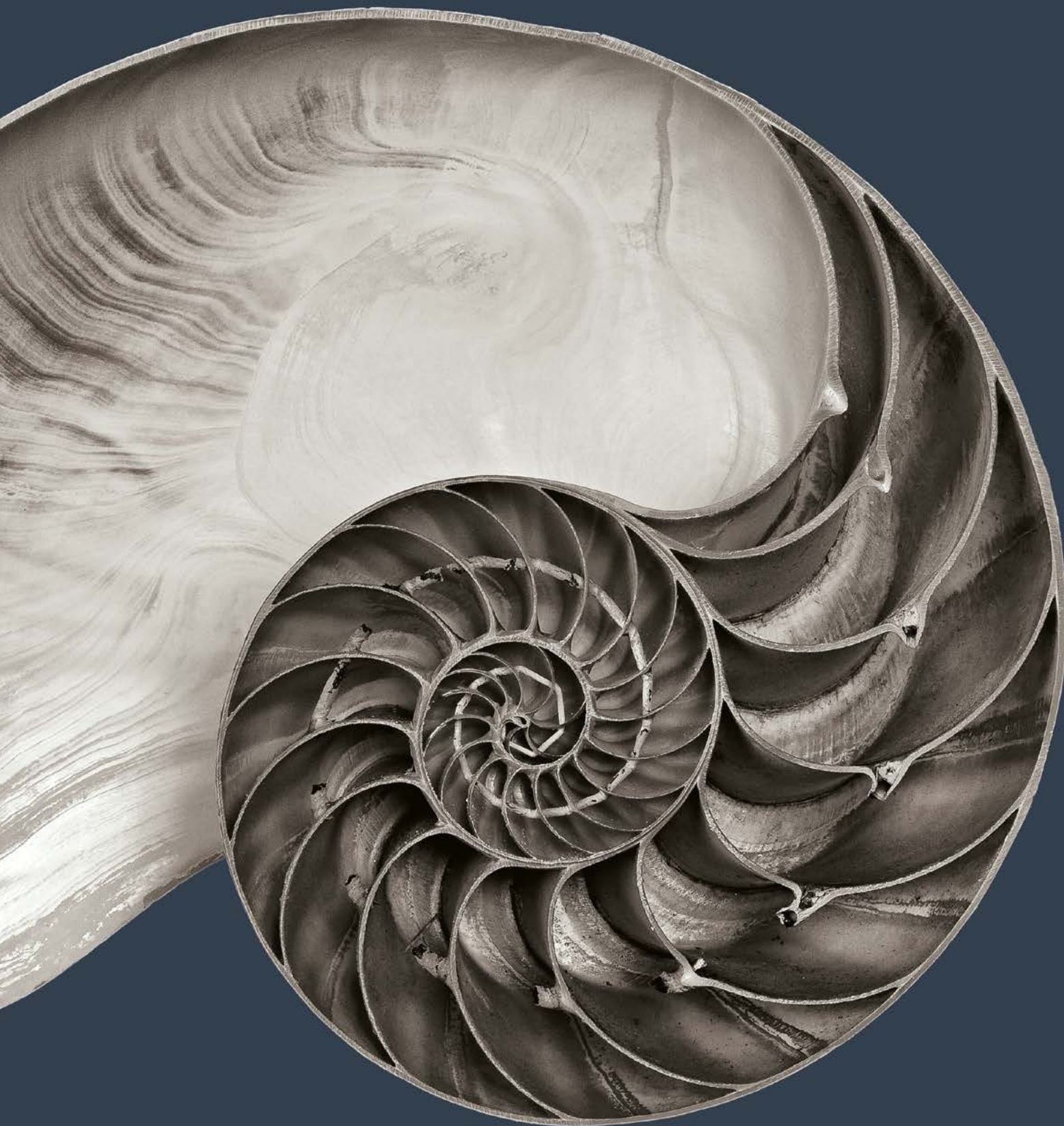
We have included values in our compliance guideline which are important to us in terms of ethics and compliance with the law. The guideline contains basic rules for fair, open and honest behaviour within the Rhomberg Group and in dealing with our business partners, suppliers and competitors. Throughout the company. Every day. And we stick to it. This is borne out by our long-term partnerships, some of which have been cultivated over the course of decades.



**Success
is created by**

working together

» A high percentage of the body of molluscs such as the nautilus consists of water, which means that they are extremely vulnerable. A safe and mobile home is therefore all the more important. The lime necessary for this is generated by these creatures themselves. The architecturally attractive shape has its origin in the function. Behind this spiral-shaped facade is hidden a fascinating labyrinth of air chambers, which the nautilus uses to regulate buoyancy.



Success is created by working together

28~29

Working together

The foundations for the success of your building project are our highly qualified, committed and motivated employees. In order to be able to hire the best staff for Rhomberg Bau, and hence for your project, we go a long way.

We provide an attractive environment for performing worthwhile, rewarding work, and we support professional excellence. Our values, our interesting projects and exemplary management qualities create continuous development opportunities for our employees. We have our own academy, the Rhomberg Academy, for staff to engage in further education and mid-career training, which secures our position as an attractive employer. This commitment has been honoured with accreditations such as "Vorarlberg's most family-friendly company", "Excellent apprenticeship scheme" and "Great Place to Work".

We want our colleagues to enjoy coming to work and to carry out their work with commitment. Because motivated members of staff perform well when they are passionate about their work - benefiting our customers as well as other employees and the company.

LEGAL MATTERS

Published by: Rhomberg Bau GmbH, Mariahilfstrasse 29, 6900 Bregenz/A

Tel: +43 5574 403-0, info@rhomberg.com, www.rhomberg.com

Responsible for the content: Matthias Moosbrugger, Torben Nakoinz

Concept and design: die3, Agency for Advertising and Communication, Dornbirn/A

Photos: © Ingo Arndt, www.ingoarndt.com, Adolf Bereuter

Print: Eberl Print, Immenstadt/D

Note: Any reference in this brochure to the male gender shall imply the female gender in equal measure; the male gender is only used to simplify the text.



www.rhomberg.com